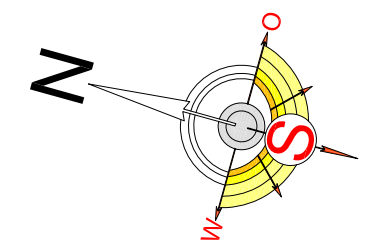


RBL=Rohbaulichte
DL = Durchgangslichte



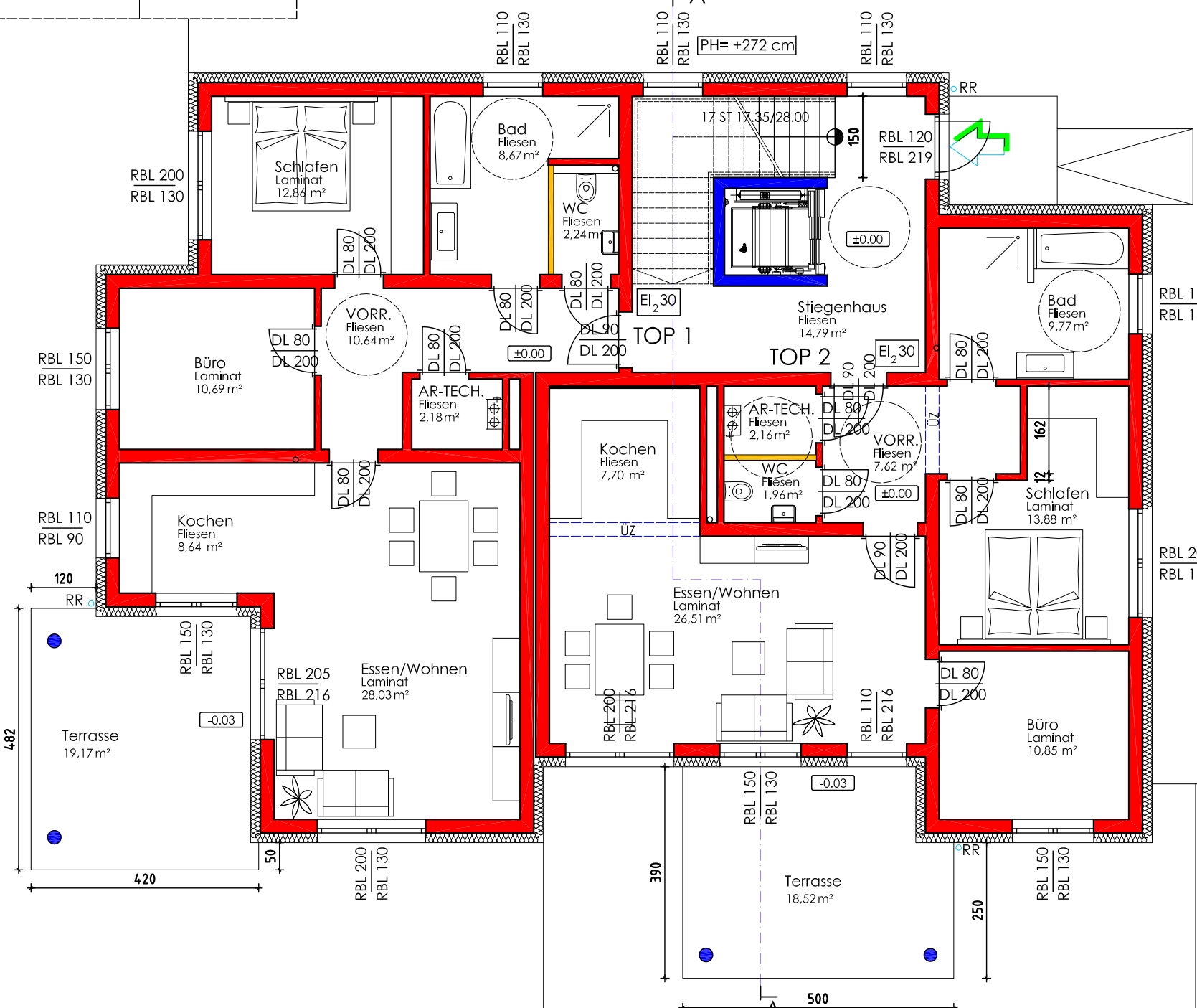
KELLER

VWS 18	1912											VWS 18	
	170	1367						375					
	25	145	25	1317						25	350	25	
	25	145	25	391	12	218	10	120	25	541	25	350	25
	170	581			295			376			115	375	

VWS 18	1383											VWS 18		
	354	612						562						
	25	329	25	562						25	130	12	115	25
	25	145	25	391	12	218	10	120	25	541	25	350	25	
	170	581			295			376			115	375		

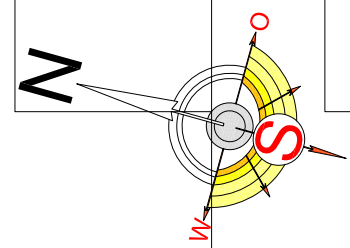
VWS 18	1383											VWS 18	
	118	478						477					
	125	218	25	509						25	218	25	
	165	279	12	25	10	127	25	1090	1140	243			
	497	310	12	382	25	115	10	127	25	1090	1140		
	25	115	25	1090						1140			
	25	115	25	1090						1140			

VWS 18	1912											VWS 18
	167	118	205	299	159	259.5	214.5	90	235	165		
	25	260	25	454	2525	694	25	350	25			
	25	360	12	150	17	168	1220	170	12	190	25	350
	25	260	25	454	25	723	25	350	25			
	285	504			723			400				

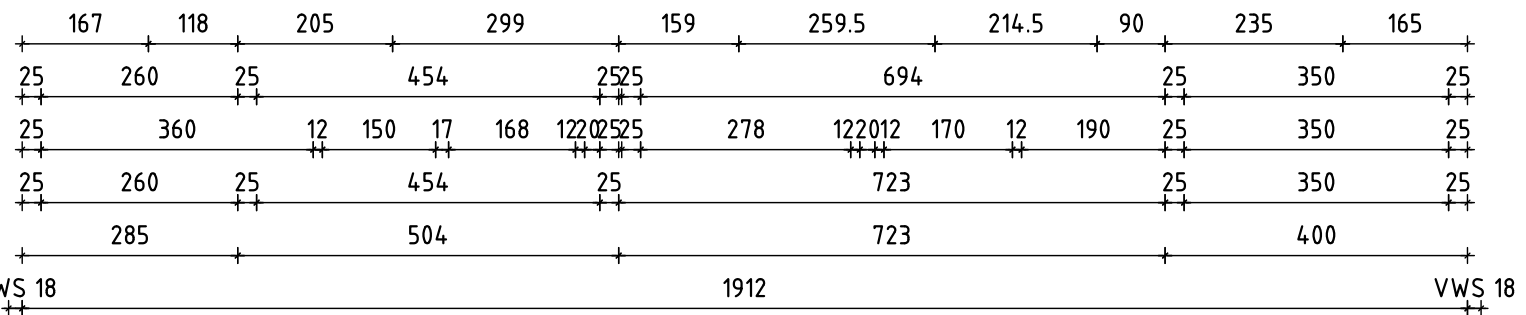
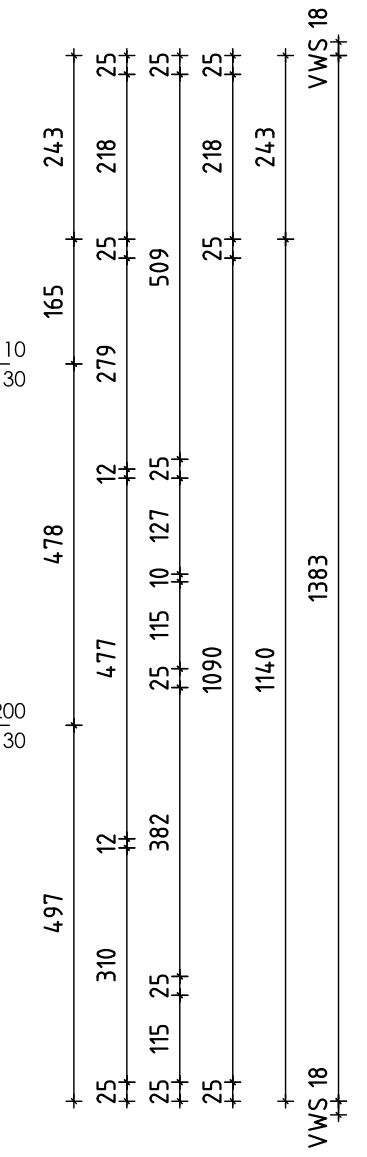
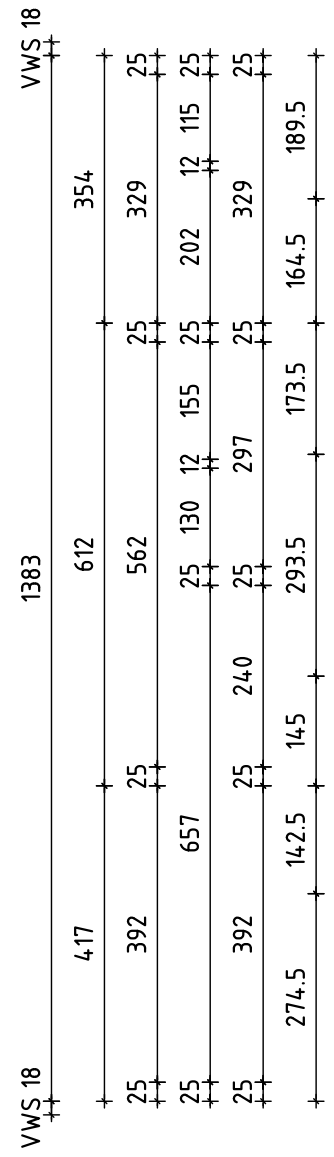
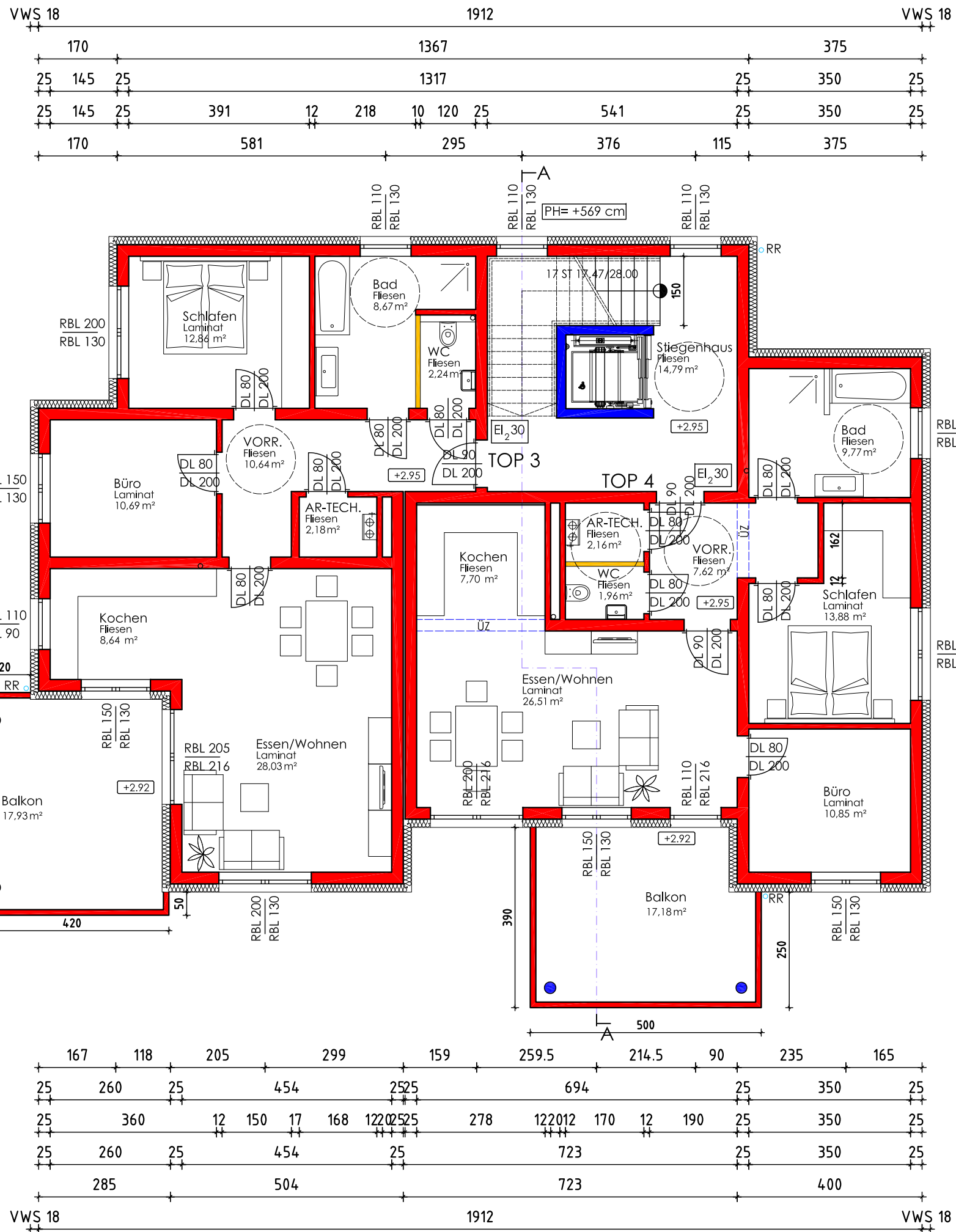


RBL=Rohbaulichte
DL = Durchgangslichte

Wohnfläche Top 1	83,95 m ²
Wohnfläche Top 2	80,45 m ²

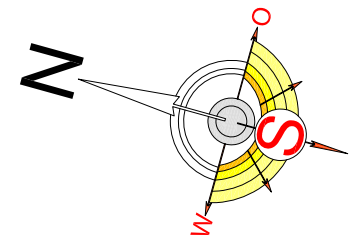


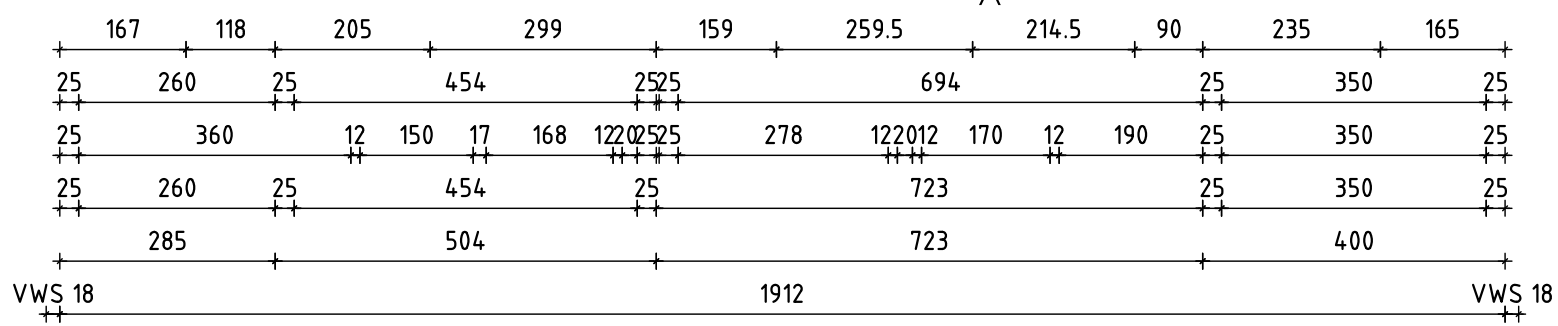
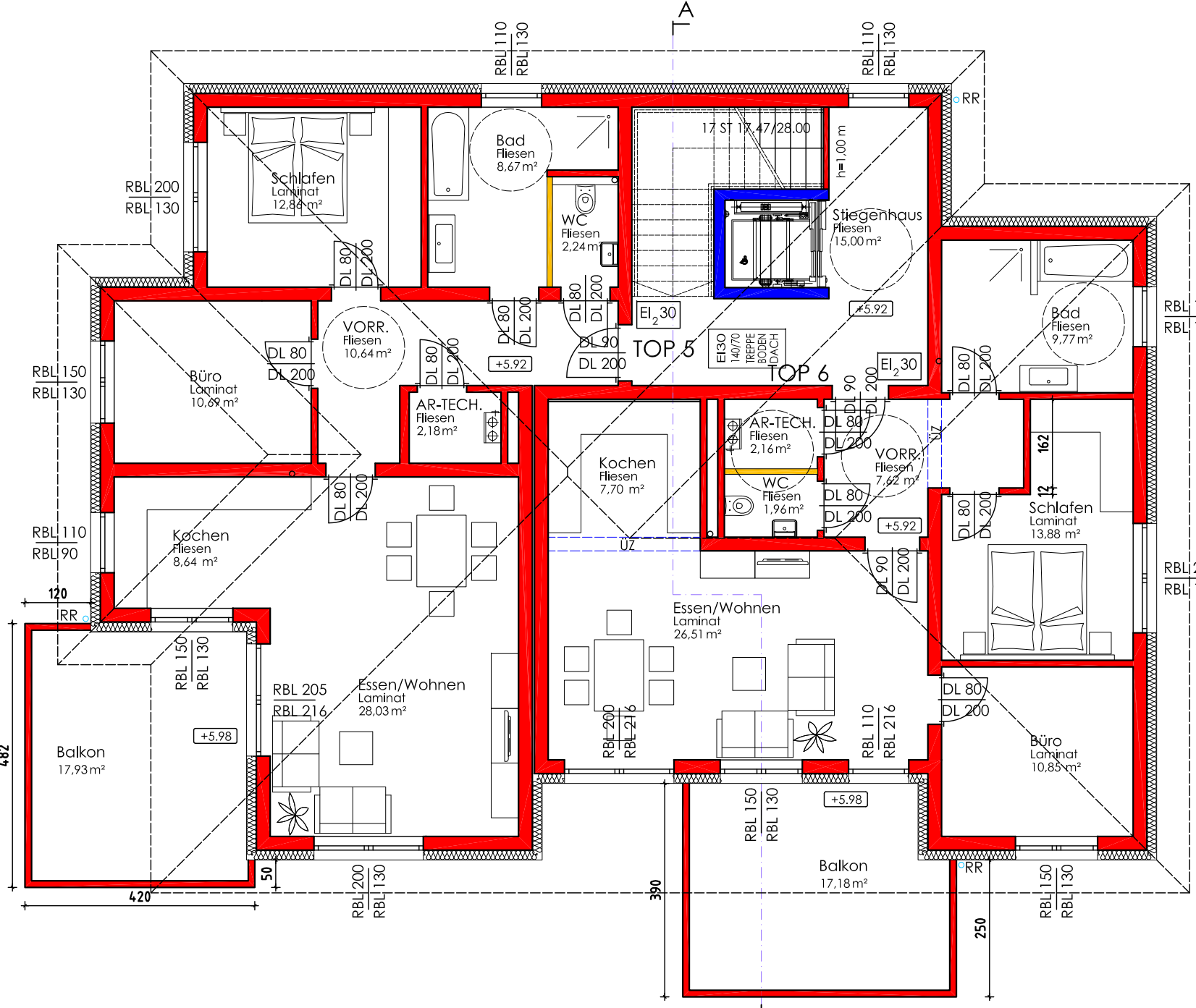
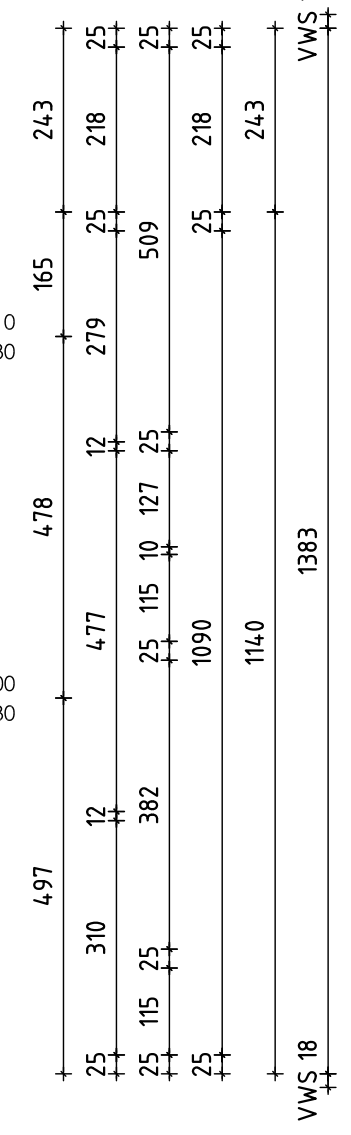
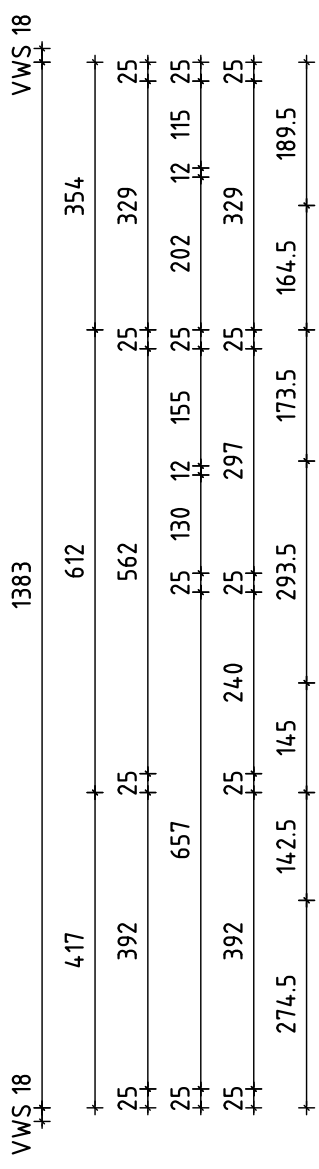
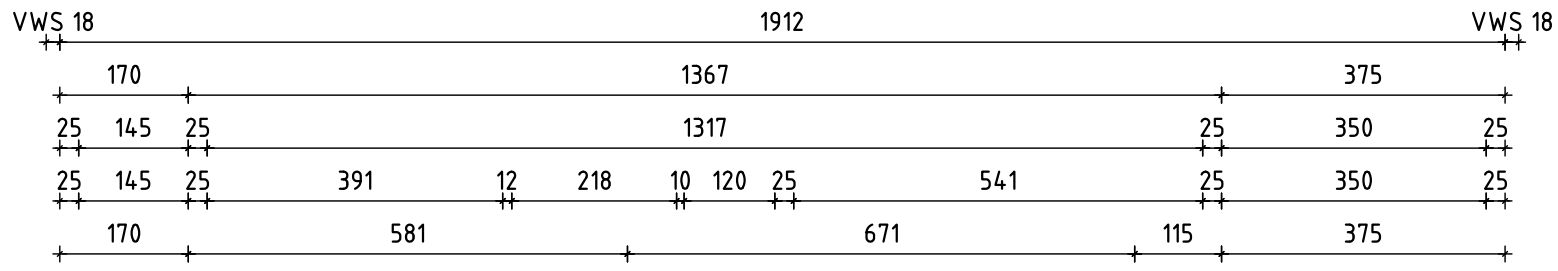
ERDGESCHOSS



RBL=Rohbaulichte
DL = Durchgangslichte

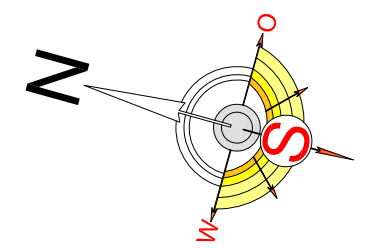
Wohnfläche Top 3 83,95 m²
Wohnfläche Top 4 80,45 m²





RBL=Rohbaulichte
DL = Durchgangslichte

Wohnfläche Top 5	83,95 m²
Wohnfläche Top 6	80,45 m²



2.OBERGESCHOSS