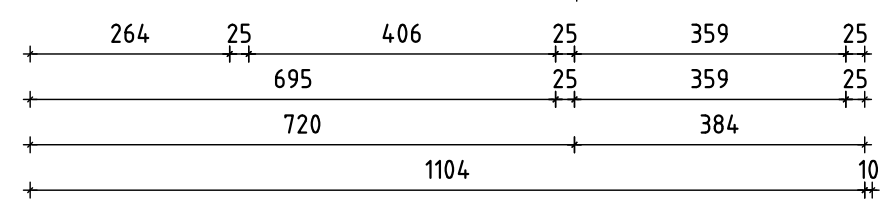
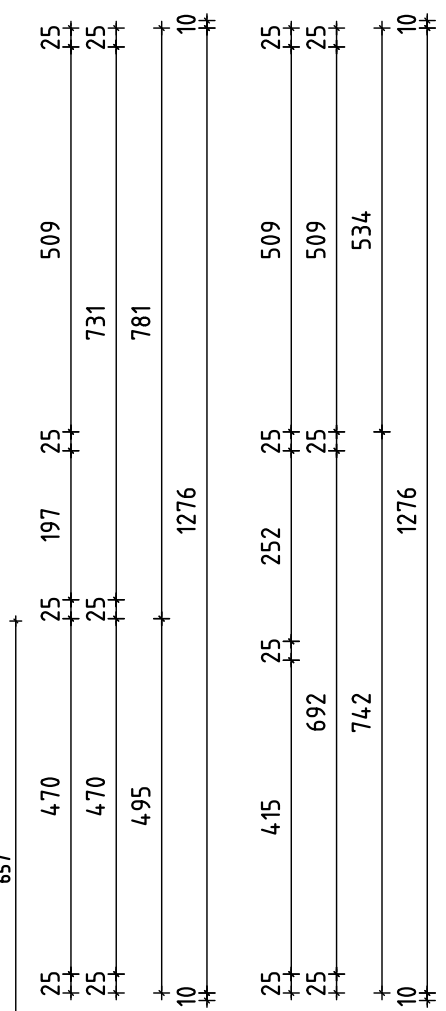
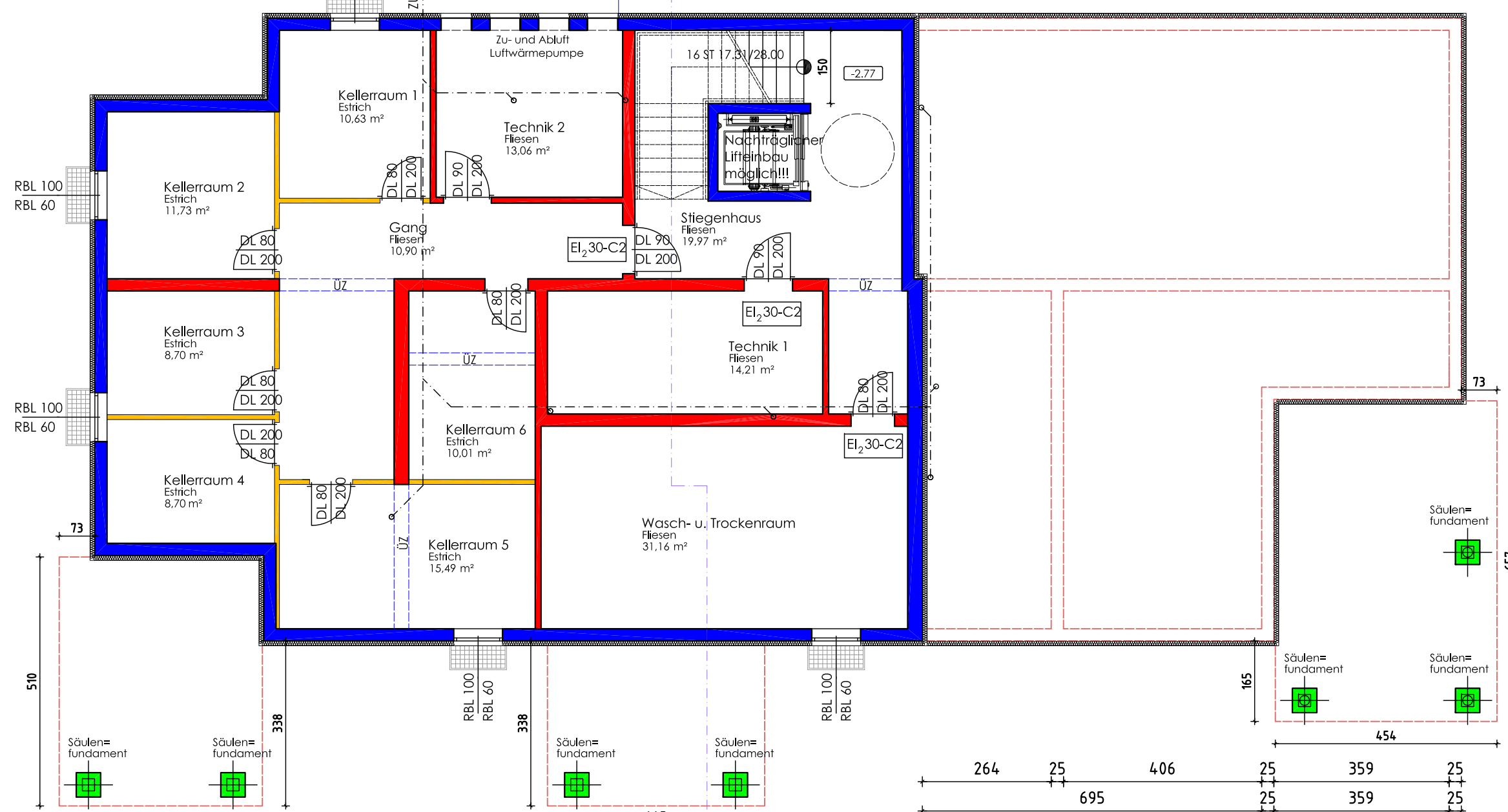
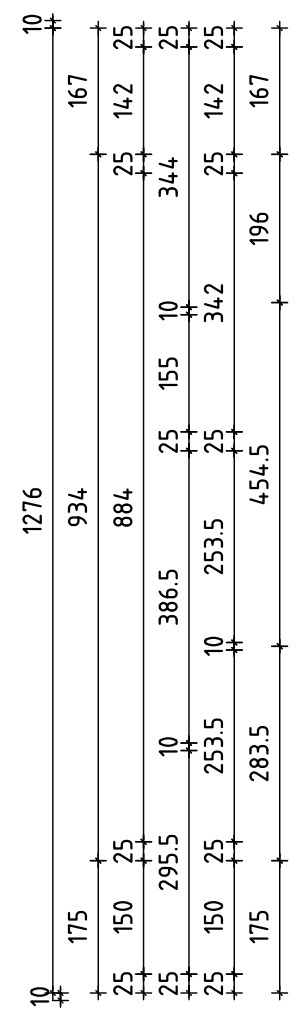
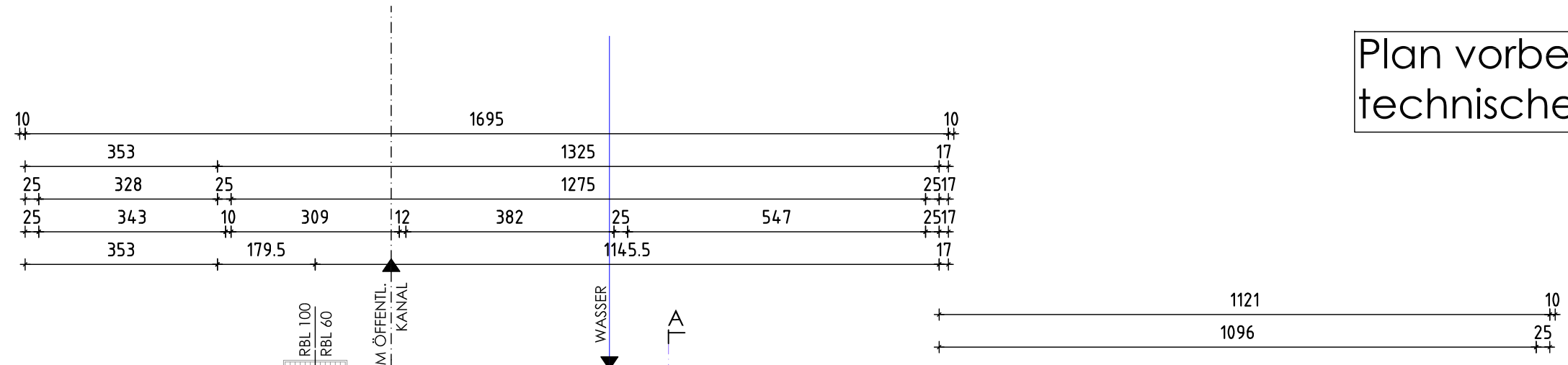
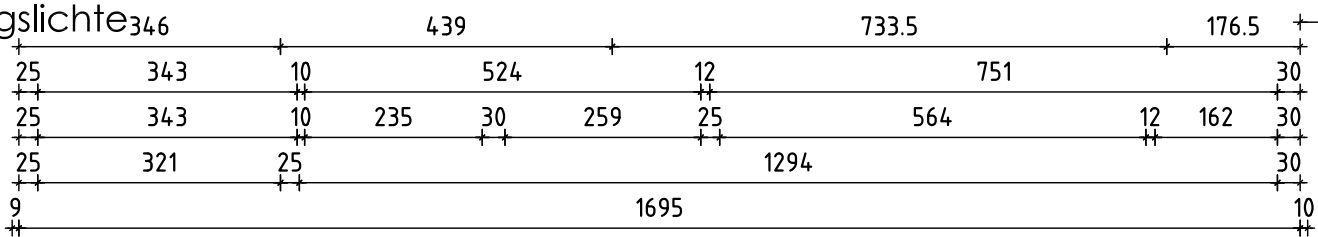


Plan vorbehaltlich technischer Änderungen!!!



RBL=Rohbaulichte  
DL = Durchgangslichte

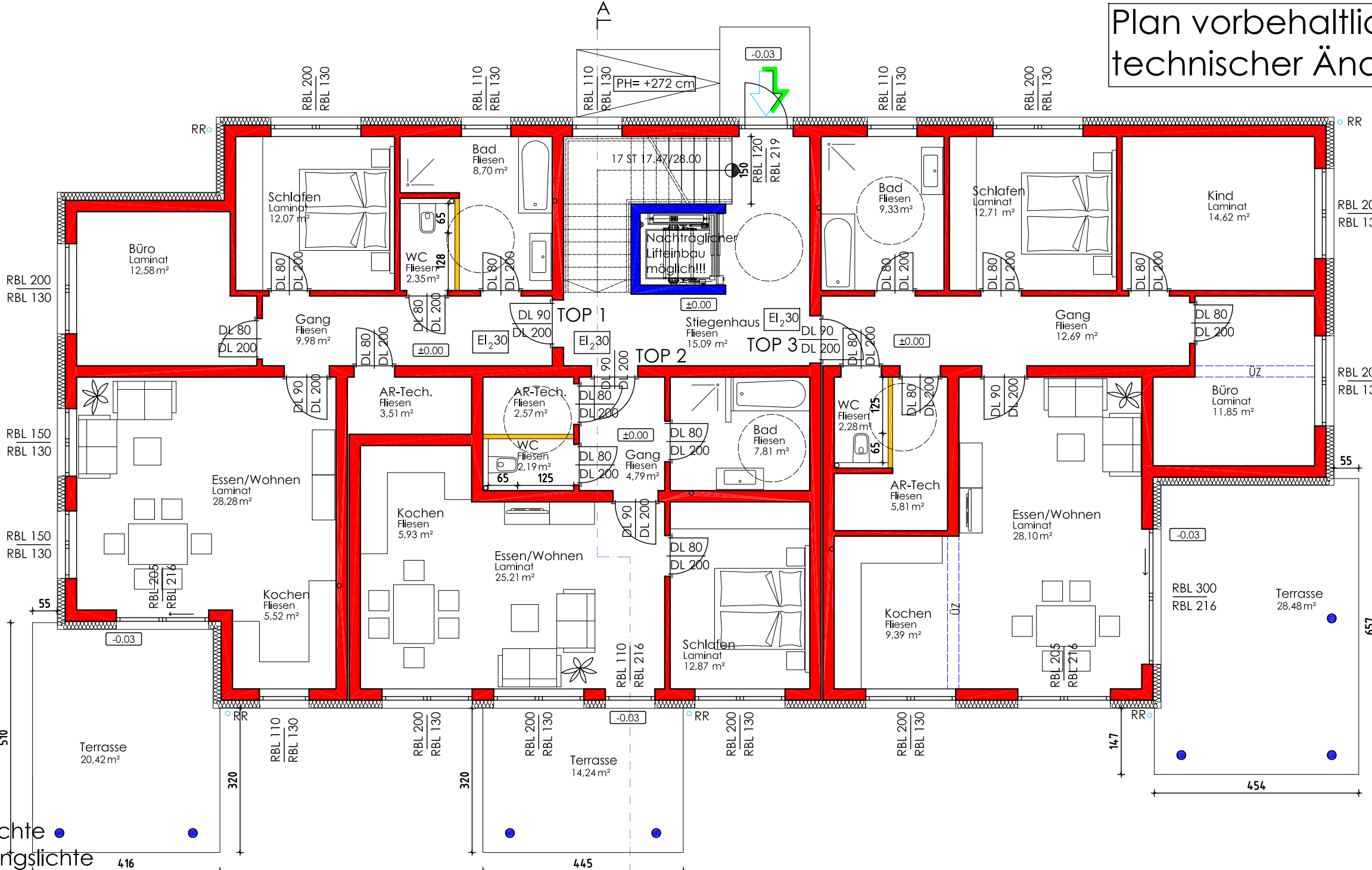


KELLER

VWS 18	2799															VWS 18	
	353	2446															
	25	328	25	2396										25			
	25	400	12	644	25	547	25	818.5				12	265.5	25			
	25	341	12	353	12	122	10	206	25	547	25	273	12	371.5	12	427.5	25
	353	203	378	247	375	280	323.5				639.5						

Plan vorbehaltlich  
technischer Änderungen!!!

VWS 18	1276											VWS 18
	167	25	142	25	509	509	342	25	142	167		
	934	884	127	25	115	10	127	25	341	196		
	175	25	415	25	540	692	517	227	341	175		
	25	25	25	25	25	25	25	25	25	25		



VWS 18	1276											VWS 18
	196	25	342	25	371.5	377	213.5	265.5	229.5	657		
	342	25	342	25	371.5	377	213.5	265.5	229.5	657		
	25	155	12	155	12	155	12	155	12	155	12	
	25	509	25	731	781	1276						

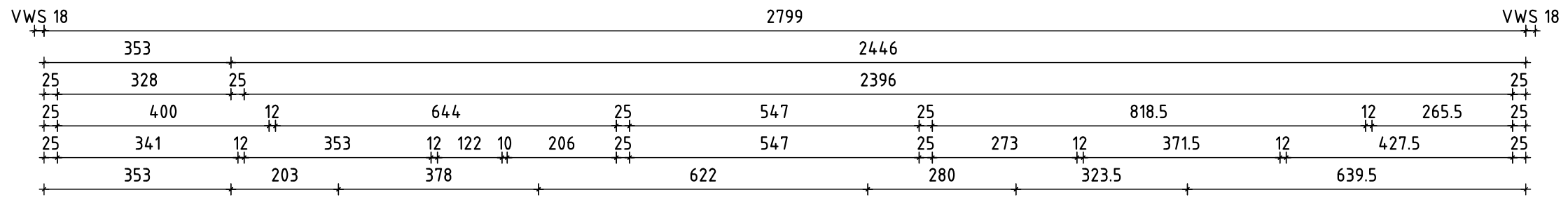
RBL=Rohbaulichte ●  
DL = Durchgangslichte

Wohnfläche Top 1	82,99 m²
Wohnfläche Top 2	61,37 m²
Wohnfläche Top 3	106,78 m²

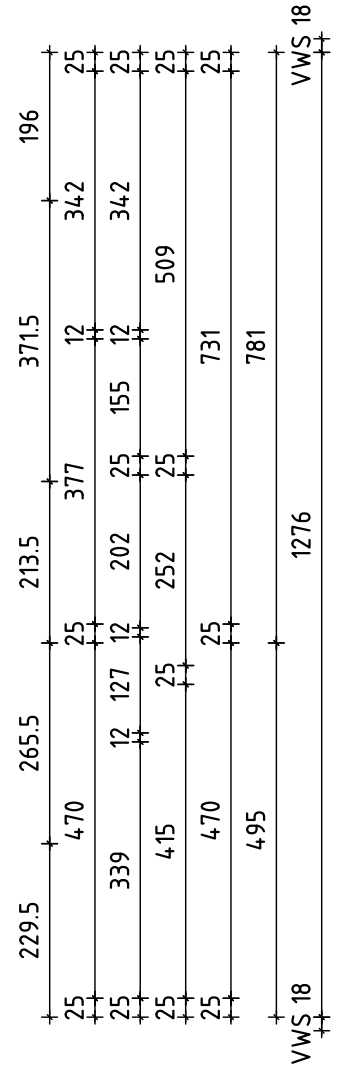
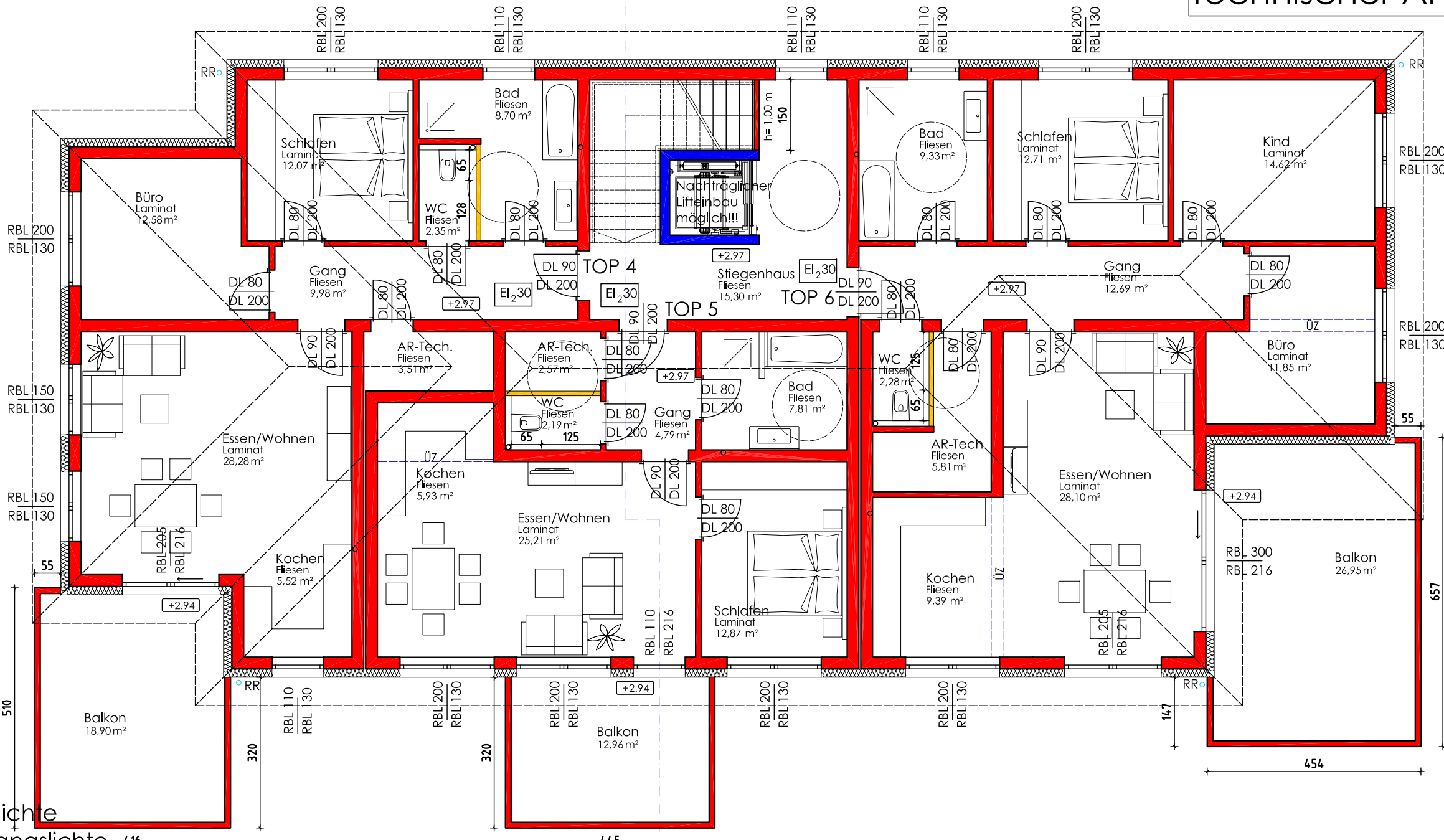
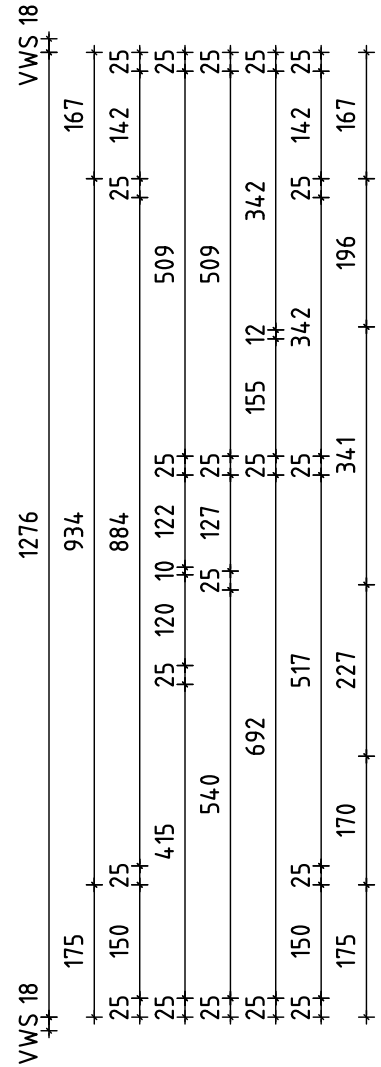


VWS 18	215.5	130.5	140	317	248	203	A	244	379	340.5	197.5	384	VWS 18
	25	321	25	230	2525	676	12	310	2525	683	25	359	25
	25	576	25	276	25	202	12	190	12	310	2525	120	10
	25	321	25						2019	25	359	25	
	346								2069			384	
VWS 18	2799												VWS 18

ERDGESCHOSS



Plan vorbehaltlich technischer Änderungen!!!



RBL=Rohbaulichte  
DL = Durchgangslichte

Wohnfläche Top 4	82,99 m²
Wohnfläche Top 5	61,37 m²
Wohnfläche Top 6	106,78 m²

